

# Welcome and Introduction

Gerry Sutton

Deputy Director

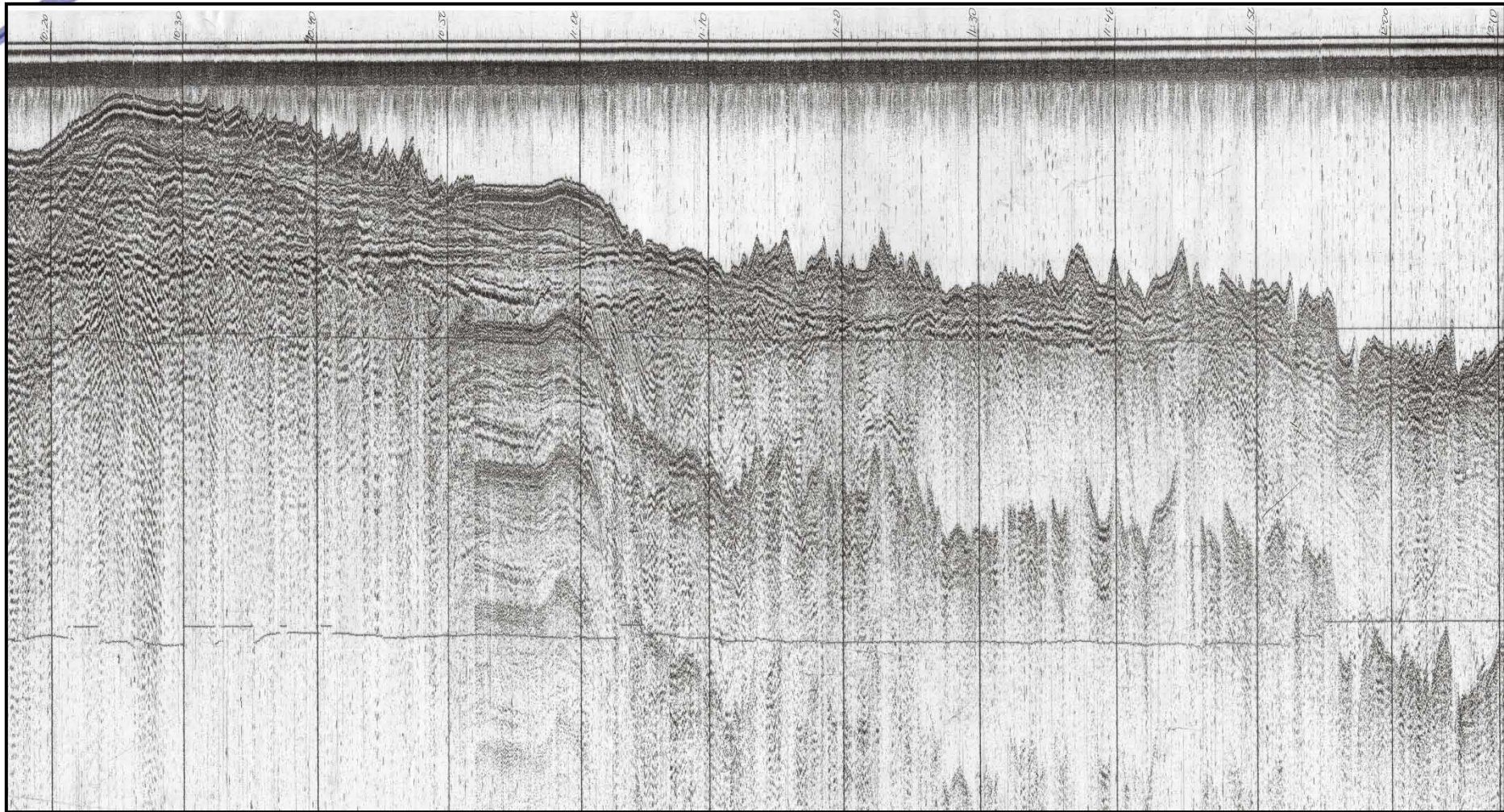
Coastal and Marine Research Centre

Coastal & Marine Research Centre  
*Ionad Taighde Cósta is Mara*





# Geo-Seas







Coastal & Marine Research Centre  
*Ionad Taighde Cósta is Mara*



<http://cmrc.ucc.ie/>



**ucc**  
Coláiste na hOllscoile Corcaigh, Éire  
University College Cork, Ireland

Irish Maritime and Energy Resource Cluster  
**imerc**





# UCC

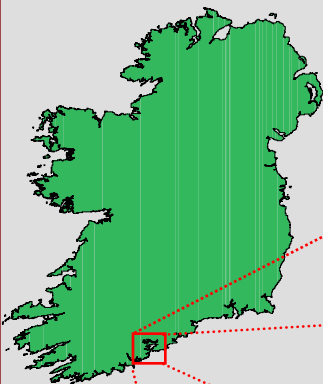
Coláiste na hOllscoile Corcaigh, Éire  
University College Cork, Ireland

## Coastal & Marine Research Centre

### GEOSEAS – 9-10 October 2012



## CMRC – Haulbowline:







**UCC**

Coláiste na hOllscoile Corcaigh, Éire  
University College Cork, Ireland

**Coastal & Marine Research Centre**

**GEOSEAS – 9-10 October 2012**



## **CMRC Profile**

### **Multi-disciplinary research centre:**

- **Governance**
- **Marine Ecology**
- **Applied Remote Sensing and GIS**
- **Geomatics**
- **Seabed Mapping & Coastal Processes**

### **Staff with diverse backgrounds and interests:**

- **Computer Science , Engineering, Physical & Social Geography, Geomorphology, Hydrography, Environmental Management, GIS & Remote Sensing, Marine Biology, Numerical Modelling, Zoology**
- **Researchers fluent in all major European languages plus Arabic, Chinese, Russian**
- **Current staff nos. = 40 (20 Post-doc, 11 RA, 7 Students, 2 Admin)**



# UCC

Coláiste na hOllscoile Corcaigh, Éire  
University College Cork, Ireland

## Coastal & Marine Research Centre

### GEOSEAS – 9-10 October 2012



## CRMC External Links

**Not part of any UCC School but maintain strong research (& teaching) links with:**

- Human Environment (Geography, Planning), BEES (Biology, Ecology and Earth Sciences) and Computing Science
- Research Centres - HMRC / ASU / AFDC / 4C

**Worked collaboratively with UCC Disciplines including:**

- Economics, Engineering, Law, Government, Philosophy....

**External Links:**

- Regional & Local Authorities (fr. Cork to Donegal)
- Nationally Government Depts & Agencies (DCENR, DAFF EPA, GSI, MI, SEIA)
- Internationally - Links with virtually all key marine research institutes and universities across European and with in N. America (Rhode Island / VIMS / Memorial) and S. America (INPE, Brazil)



# UCC

Coláiste na hOllscoile Corcaigh, Éire  
University College Cork, Ireland

## Coastal & Marine Research Centre

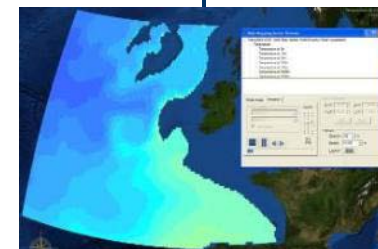
### GEOSEAS – 9-10 October 2012



## Beaufort Research Laboratory



Coastal & Marine Research Centre  
*Ionad Taighde Cósta is Mara*



Sustainable Energy Research Group



### Partner Institutions:

**Core partners:** NMCI, CIT, Port of Cork, IDA, Sustainable Energy Ireland, Irish Naval Service, Bord Gáis

**Additional research collaborators:** NUIG, UCD, NUIM, QUB, Marine Institute





# UCC

Coláiste na hOllscoile Corcaigh, Éire  
University College Cork, Ireland

## Coastal & Marine Research Centre

### GEOSEAS – 9-10 October 2012



## Beaufort Laboratory







# UCC

Coláiste na hOllscoile Corcaigh, Éire  
University College Cork, Ireland

## Coastal & Marine Research Centre

### GEOSEAS – 9-10 October 2012



## Beaufort Laboratory





# UCC

Coláiste na hOllscoile Corcaigh, Éire  
University College Cork, Ireland

## Coastal & Marine Research Centre

### GEOSEAS – 9-10 October 2012



Irish Maritime and Energy Resource Cluster  
**imerc**

- **Irish Naval Service** - *“to be the smartest, most innovative, responsive naval service provider in the world by 2016”*
- **Cork Institute of Technology** – National Maritime College of Ireland – domain experts includes the world’s largest suite of bridge simulators
- **University College Cork** – Beaufort Laboratory – Worlds largest marine renewable energy research centre
  - Hydraulics and Maritime Research Centre
  - Coastal & Marine Research Centre
  - Sustainable Energy Research Group







# UCC

Coláiste na hOllscoile Corcaigh, Éire  
University College Cork, Ireland

## Coastal & Marine Research Centre

### GEOSEAS – 9-10 October 2012



## Future Lower Cork Harbour?

