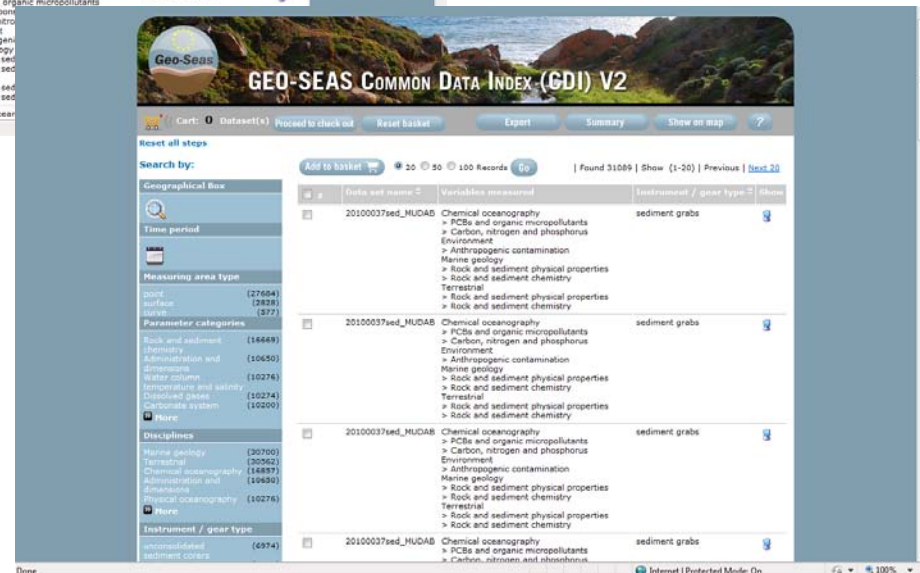
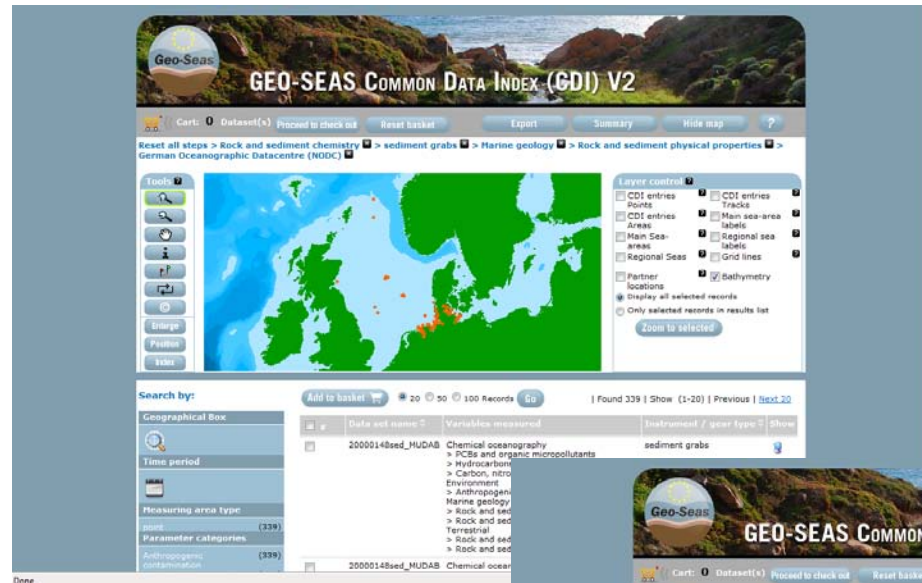




# Geo-Seas

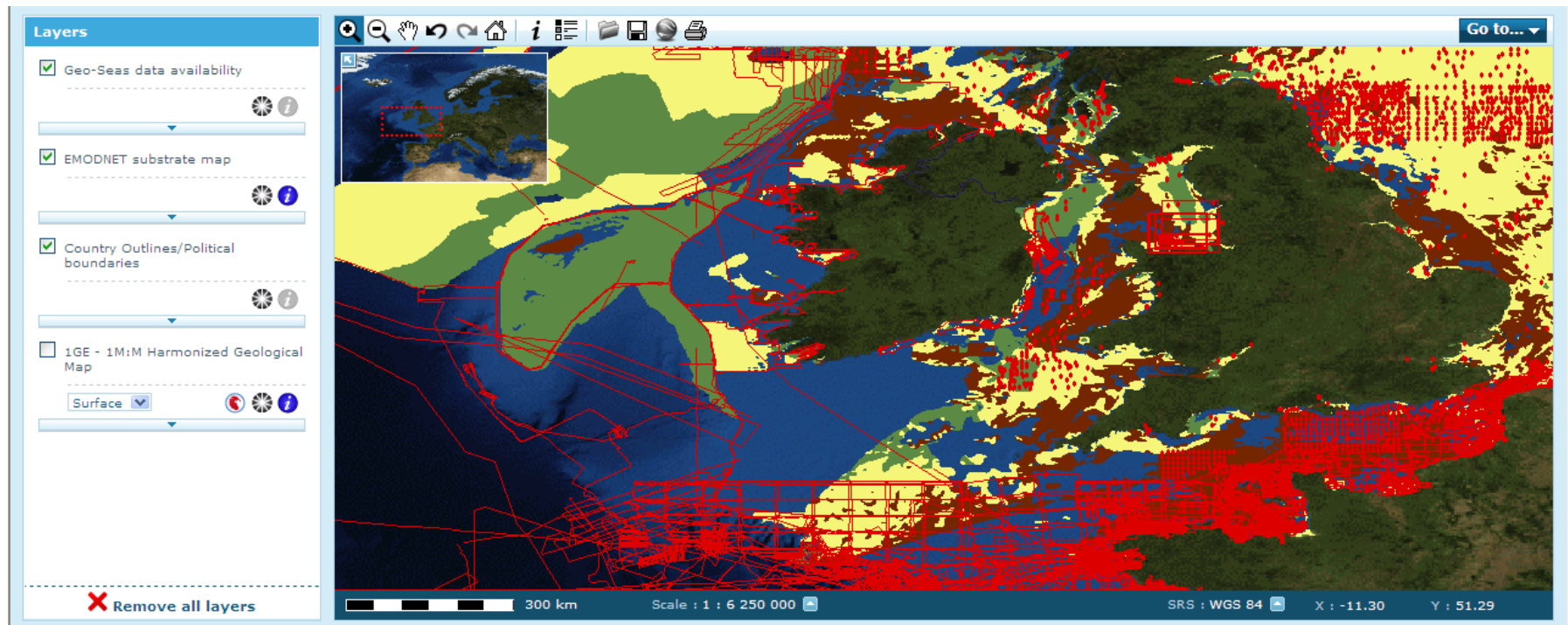
## ***Geo-Seas : the way forward?***

## Geo-Seas portal



Continued expansion of number of datasets available in the discovery and access service (portal)

## *Development of a WFS for integration with EMODNET Geology*





## *New communities of interest*

Archaeology:

- SPLASHCOS initiative

Others?

**SPLASHCOS**  
Submerged Prehistoric Archaeology and Landscapes of the Continental Shelf

Home About Events and Meetings Research & Publications Training Contact

Search SPLASHCOS Search

**Welcome to SPLASHCOS**

SPLASHCOS is a four-year research network funded by the European Commission under its COST program (Cooperation in Science and Technology) from 2009 to 2013.

Its aim is to bring together archaeologists, marine geophysicists, environmental scientists, heritage agencies, and commercial and industrial organizations interested in researching, managing and preserving the archives of archaeological and palaeoclimatic

**cost**  
EUROPEAN COOPERATION  
IN SCIENCE AND TECHNOLOGY

SPLASHCOS is COST Action TD0902. [Click to find out more...](#)

**SPLASHCOS News**





# Geo-Seas

# HORIZON 2020

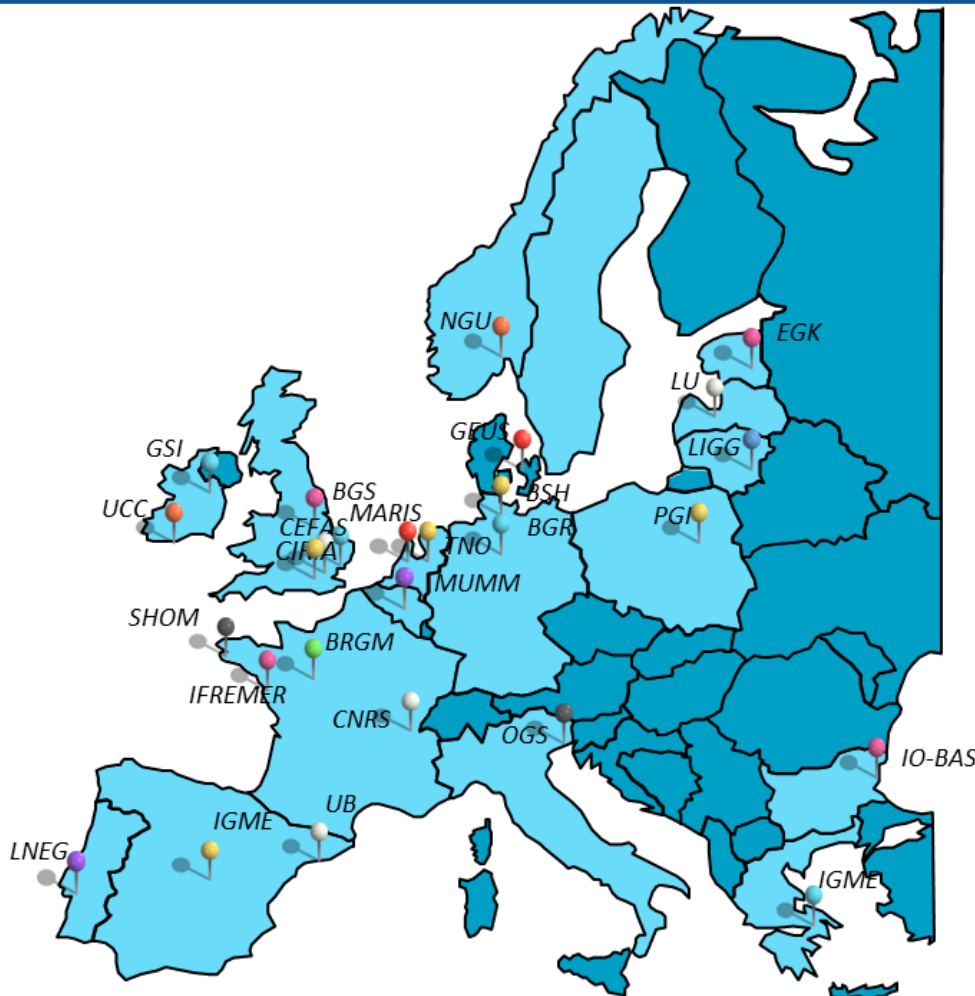
THE FRAMEWORK PROGRAMME FOR RESEARCH AND INNOVATION

*Proposal for Geo-Seas II : Horizons  
2020 (2014?)*



## *Geo-Seas II*

- Additional partners



Belgium (MUMM)  
 Bulgaria (IO-BAS)  
 Denmark (GEUS)  
 Estonia (EGK)  
 France (IFREMER, BRGM, CNRS, SHOM)  
 Germany (BSH, BGR)  
 Greece (IGME, NOA)  
 Italy (OGS)  
 Ireland (GSI, UCC)  
 Lithuania (NRC-IGG)  
 Latvia (LU)  
 Netherlands (MARIS, TNO, EU-Consult)  
 Norway (NGU)  
 Poland (PGI)  
 Portugal (LNEG)  
 Spain (IGME, UB)  
 United Kingdom (NERC, CEFAS, CIRIA)



## *Geo-Seas II*

- Additional partners
- Add extra agreed data types



## *Agreed data types and formats*

Bathymetry (tracking)

ODV

Bathymetry (gridded & swath)

NetCDF

Borehole

ODV & GeoSciML

Borehole (images)

PNG

Seismics (digital data)

SEG-Y

Seismics (scanned images)

TIFF / PNG

Seismics (navigation)

UKOOA

Side scan sonar

XTF

Images

PNG

Maps (data products)

GeoSciML

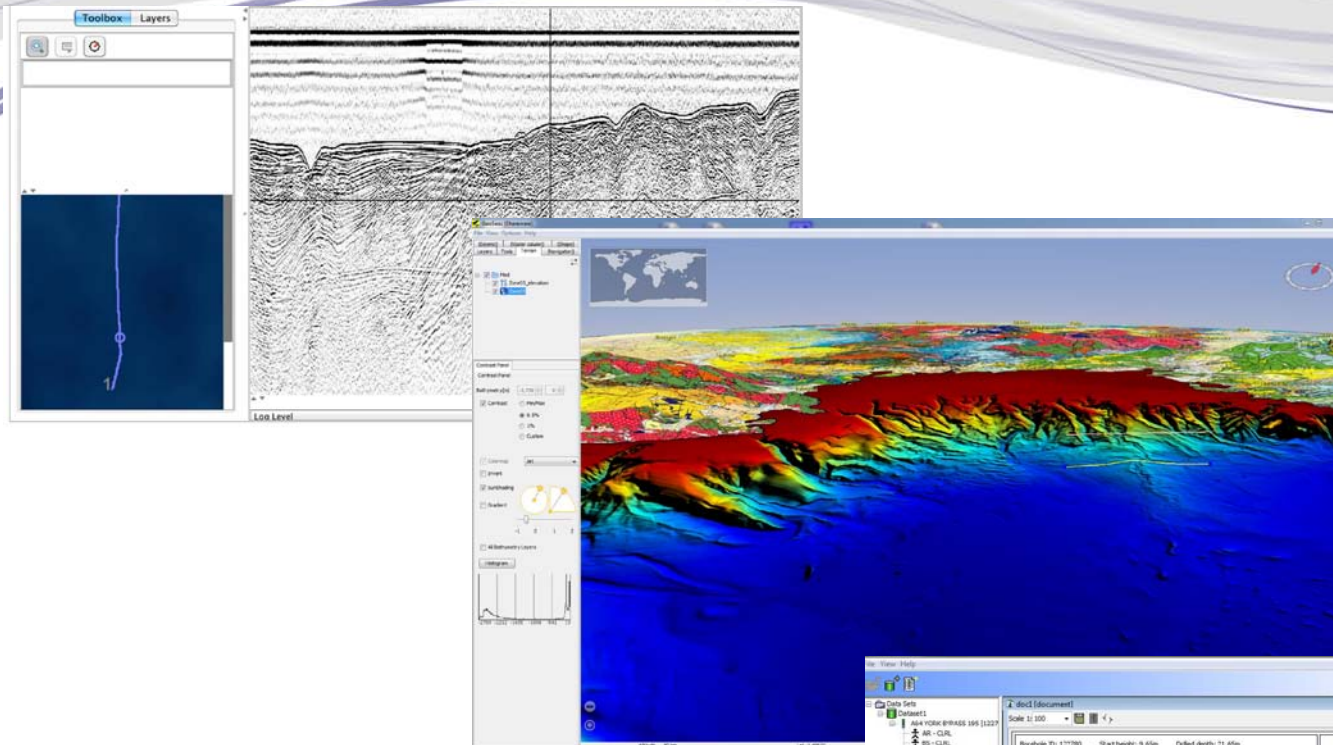


## *Geo-Seas II*

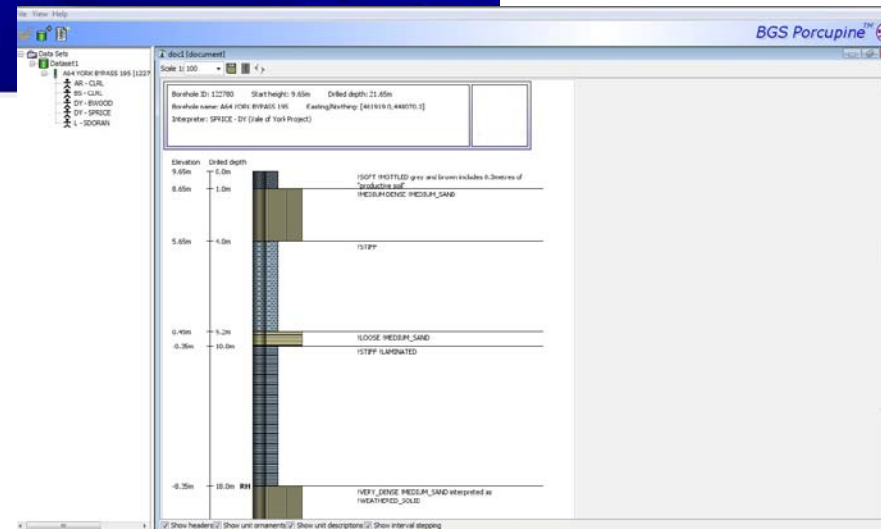
- Additional partners
- Add extra agreed data types
- New tools and services?

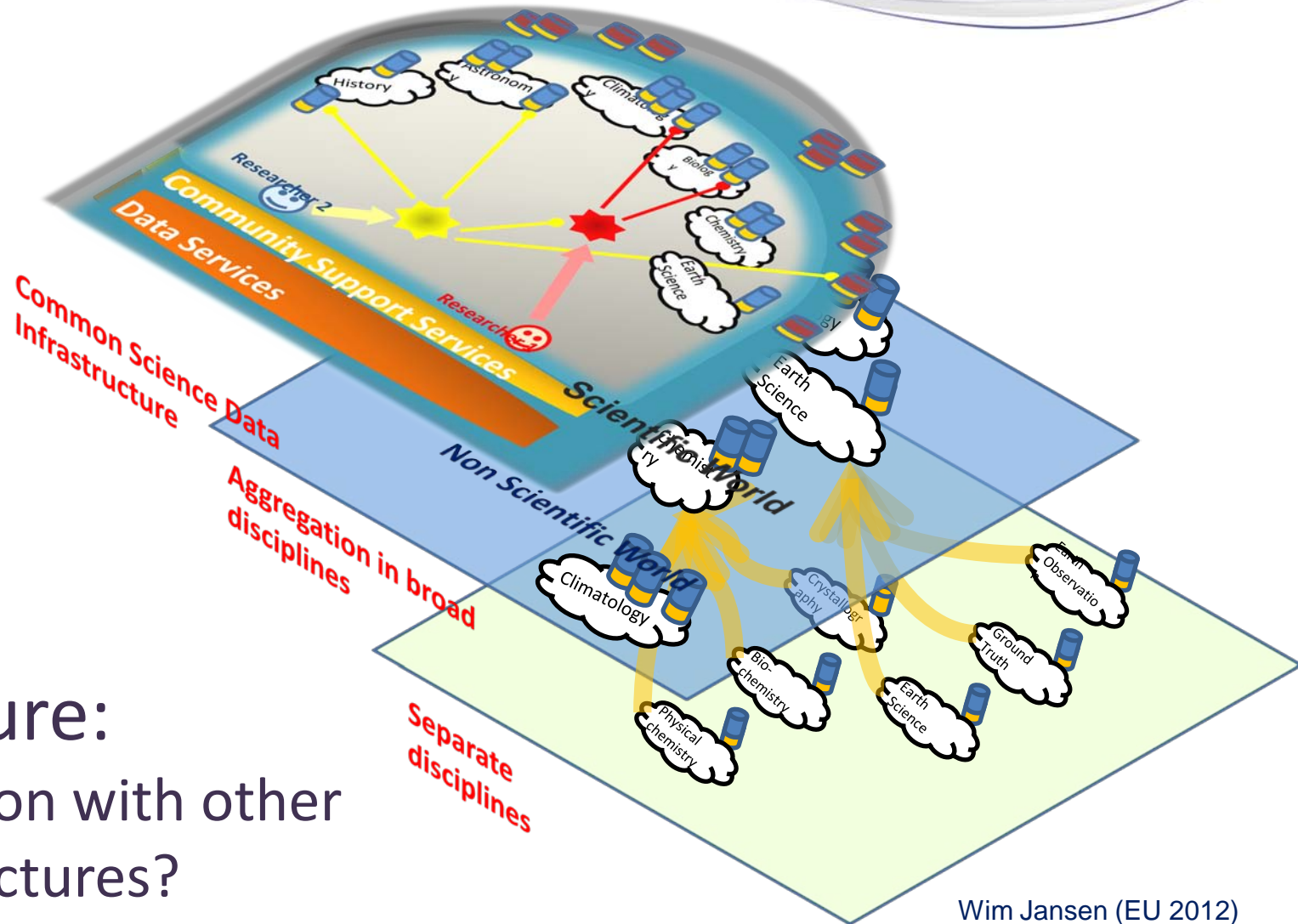


# Geo-Seas



*New tools and  
services*





The future:  
Integration with other  
infrastructures?